



## **FCRP QUARTERLY MEETING AGENDA**

Wednesday | July 12th, 2017 | 200 PM-4:00 PM

12000 Government Center Parkway  
Conference Rooms 4&5

### **Meeting Notes**

**Attending:** Kris Unger, Suzy Foster, Betsy Smith, Karen Fuentes, Jim McGlone, Eric Forbes, Patti Stevens, Kay Fowler, Sarah Menon, Christina Fullmer, Paul Davis, Amy Gould, Terry Yates, Tom Tasselli, Gale Minnich Blewis, Allison Richter, Jalen Jennings

#### **Welcome & introductions**

##### **495 Express Lanes walk through**

Following the welcome & introductions we began by reviewing the issues relating to the 495 Express Lanes walk through follow up. See documents on pages 4-7. Terry Yates summarized the issues that were discovered and how each of those will be addressed. How we could streamline the process to avoid having to walk through the area was discussed and it was decided that Terry Yates would follow up with Suzy Foster & Betsy Smith of Stormwater Planning on the newly discovered issues and the progress on their remediation. It was also pointed out that VDOT has done a great job at fixing most of the punch list items from the first walk-thru a year ago. Tom Tasselli assured FCRP that the plant lists for this area have been updated with native plants so we can avoid the invasive plant issues for future projects. This is no small accomplishment and we are very thankful for VDOTs cooperation on this issue.

There was discussion and an agreement to find a nonprofit partner, request grant funding and potentially develop a pollinator meadow in the NW quadrant of the I495/Little River Turnpike interchange.

##### **Americana Drive**

Once again the trash is piling up on Americana Drive and a cleanup is being held along Americana Drive at Patriot by the Asian-American LEAD group led by Philip Latasa and staff from Kaye Kory's office. We had the discussion again of the trash issue at Avant apartments and it was determined that we need to do more follow up. Code Enforcement has been out there but said they can't touch VDOT property. But if the source of the problem is at Avant, this could explain why it keeps happening, either there is an issue with not enough trash pickups or not enough dumpsters or too many people. Jim suggested we contact Code Enforcement go to Avant Apartments directly to check out their trash situation and perhaps bring the health department. This has been an on-going issue. As background, it is interesting to note that this used to be called Patriot Village and this continuing problem did not exist. While we thought there was a connection to the soundwalls a change in management there occurred within the past 4 years could be a coincidental occurrence we associated with the soundwalls. Below is a picture found on-line that shows overflowing dumpsters and comments on constant trash and other health problems like bed bugs. We will be following up with the Chairman's office to see how we can move forward to get this resolved as it appears Avant management is depending on everyone else in the community to take care of this trash and that cannot continue.



### **Reforest Fairfax**

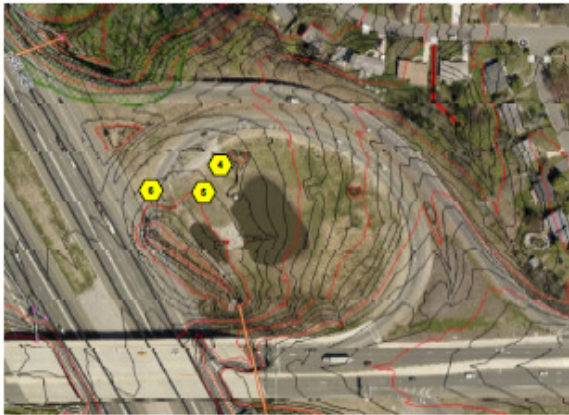
The host failed to notify us that the website was up for renewal and he let it expire. We are trying to find a way to bring the site into the FCRP website. But this might take some time to resolve.

### **Bee initiative at the 95 Landfill**

Eric Forbes summarized the new bee initiative at the 95 Landfill. By partnering with GMU and converting previously mowed areas to meadow to support the bee initiative benefits include less mowing, more interest and learning opportunity for the labor force and pride in the sustainability effort, more milkweed means more Monarch butterflies, more birds nesting in the new meadow area and the bees are happily flying within several miles of their hives to pollinate gardens as far away as Springfield. There was a discussion of winter food sources for the bees developing native bee habitat. Jim McGlone offered some suggestions on how to make sure there is enough food during winter and early spring by making some tree and crocus planting suggestions and Gale Blewis also discussed the importance of trees to pollinators in early spring. Volunteer opportunities will be developed over time and new efforts like bluebird and bat habitat will be developed. A new name for the landfill will also be sought to focus attention on the laboratory experiment aspect that is developing there. This was a very exciting presentation and we hope to hear more about this as time goes on.

### **FCRP's Leadership Team**

We had a brief discussion on FCRP's Leadership Team and changes that need to occur to our Charter to allow for new members to come on, anyone interested is encouraged to reach out. All we ask is that we find ways to work together.



**4. CONCERN:**

A. Deep gully forming from excessive run off from ramp and parking area.

**SUGGESTION:**

Re-evaluate for appropriate armoring based on actual run-off.

Treat for invasives plants, amend soils and deep till as needed, reseed with native grasses and forbs.



**5. CONCERN:**

A. Lack of stabilization in grade and vegetation shows many signs of rills and gullies forming.

B. Chinese lespedeza appears to be the predominant vegetation.

**SUGGESTION:**

Re-evaluate for appropriate armoring based on actual run-off.

Treat for invasives plants, amend soils and deep till as needed, reseed with native grasses and forbs.



**6. CONCERN:**

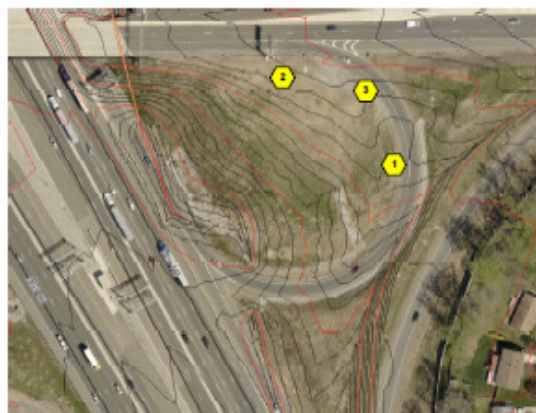
A. Blocked ditch is not maintained and perhaps incorrectly sized for area of run off.

B. Asphalt curb is restricting water flow into area that appears to be graded to attenuate heavy runoff flow.

**SUGGESTION;**

Review original plans to verify that implementation is per plan.

Re-calculate flow, size of ditch and maintenance regime to ensure proper sizing and engineering.



**1. CONCERN:**  
Excessive erosion in ditch.

**SUGGESTIONS:**  
VDOT engineers to evaluate hydraulics for appropriate armoring based on actual run-off. It is not acceptable for rip-rap to be the default solution.



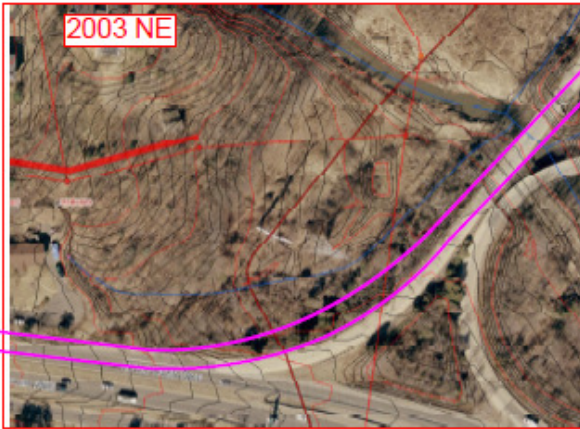
**2. CONCERN:**  
Excessive compaction in former staging area. Poor success of both herbaceous cover and woodies.

**SUGGESTIONS:**  
Amend soil as needed to allow infiltration.



**3. CONCERN:**  
Dumping of miscellaneous materials in ditch.

**SUGGESTION;**  
Remove and regrade per item #1 above.



**10. 2003 NE - GIS:**

Staging area for hotlanes construction prior to I-495 widening and realignment of off ramp. Note approximate new location of off ramp.

**11. 2009 - GIS:**

**CONCERN:**

Note impact of staging area at height of construction.

**12. 2015 - GIS:**

**CONCERN:**

Note impact of staging area even after equipment has been largely removed.



**13. 2016 - Google Aerial:**

**CONCERN:**

A. Note area of impervious surface years after staging area is closed.

**SUGGESTIONS:**

B. Due to the overhead transmission lines this area cannot be reforested however the vegetation should be returned to a high quality meadow for the entire area of impact.

C. This should include deep tilling of soil and planting with an approved native meadow seed mix.

D. Warranty of restoration work should continue until native vegetation is thoroughly established throughout the Limit of Disturbance.





**7. CONCERN:**

A. Deep gully forming from excessive run off at outfall of newly cleaned pipe.

**SUGGESTION:**

Re-evaluate for appropriate engineering based on actual run-off.

Remove invasive species, amend soil as needed, till and reseed with cover crop and native grasses.



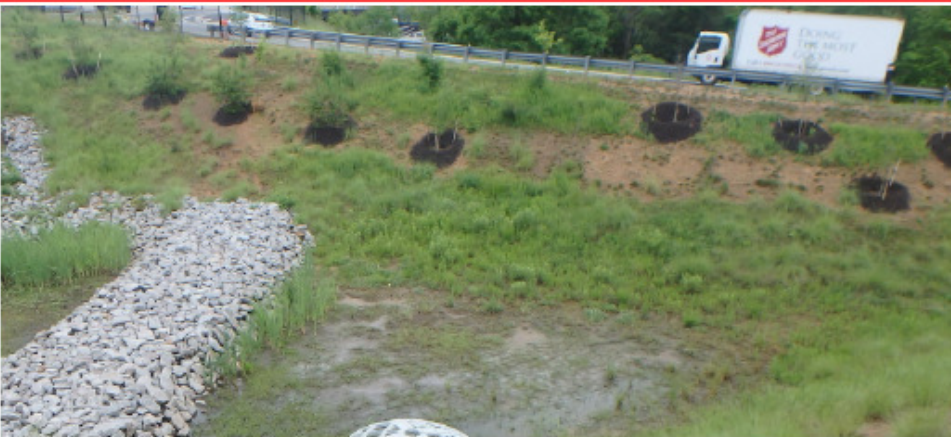
**8. CONCERN:**

A. Lack of stabilization in grade and vegetation.

B. Chinese lespedeza and non-seeded weeds appear to be the predominant vegetation.

**SUGGESTION:**

Remove invasive species, amend soil as needed, till and reseed with cover crop and native grasses.



**9. CONCERN:**

A. Poor vegetative cover both in lack of and species.

**SUGGESTION:**

Remove invasive species, amend soil as needed, till and reseed with cover crop and native grasses.